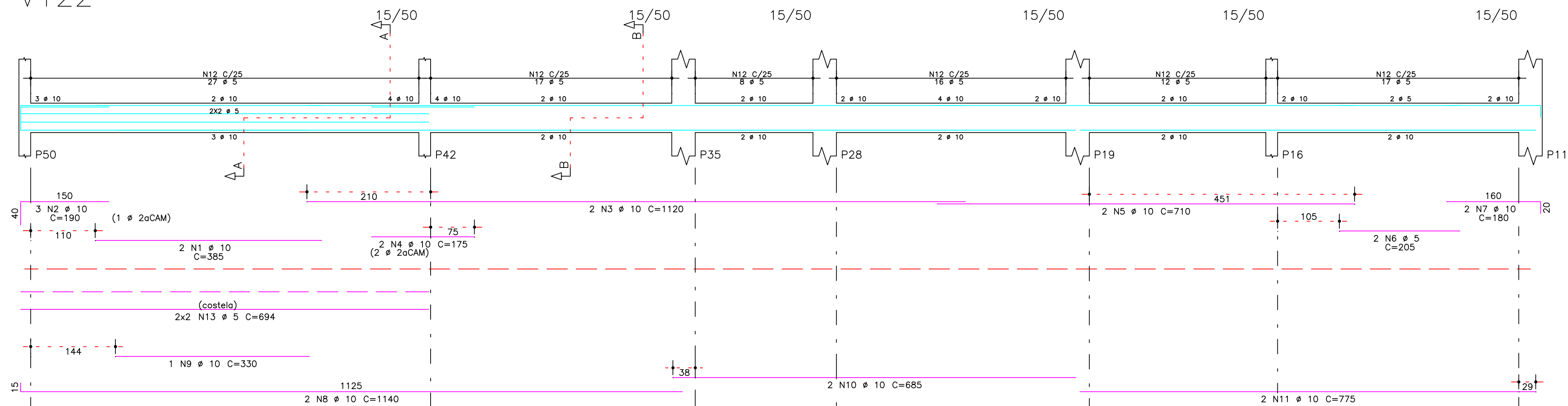
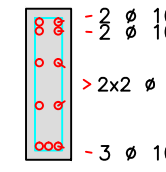


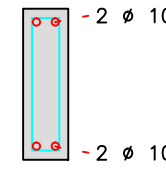
V122



Corte A

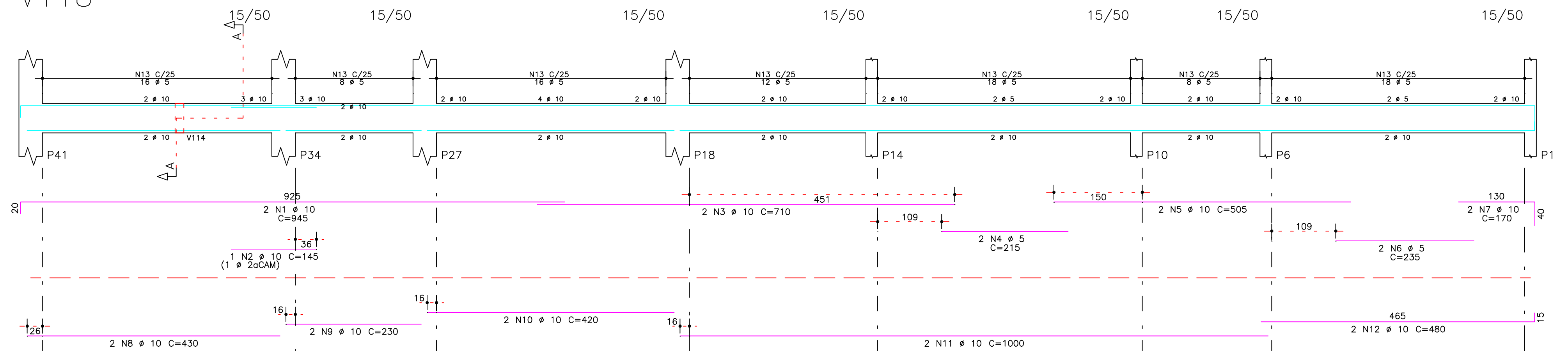


Corte B

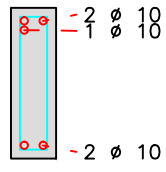


27 N12 Ø 5 C=121 70 N12 Ø 5 C=121

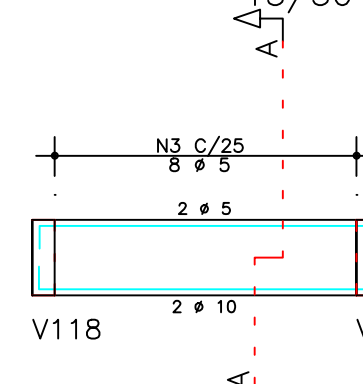
V118



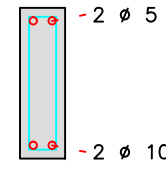
Corte A



V114



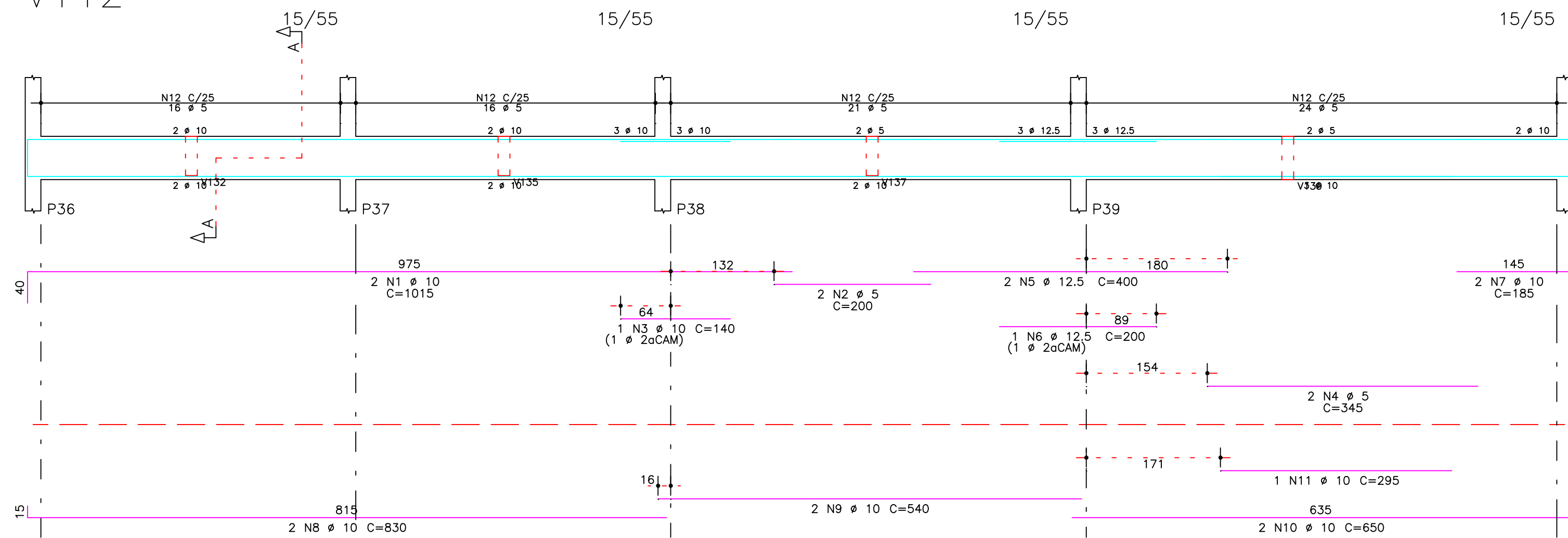
Corte A



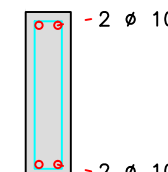
96 N13 Ø 5 C=121

8 N3 Ø 5 C=121

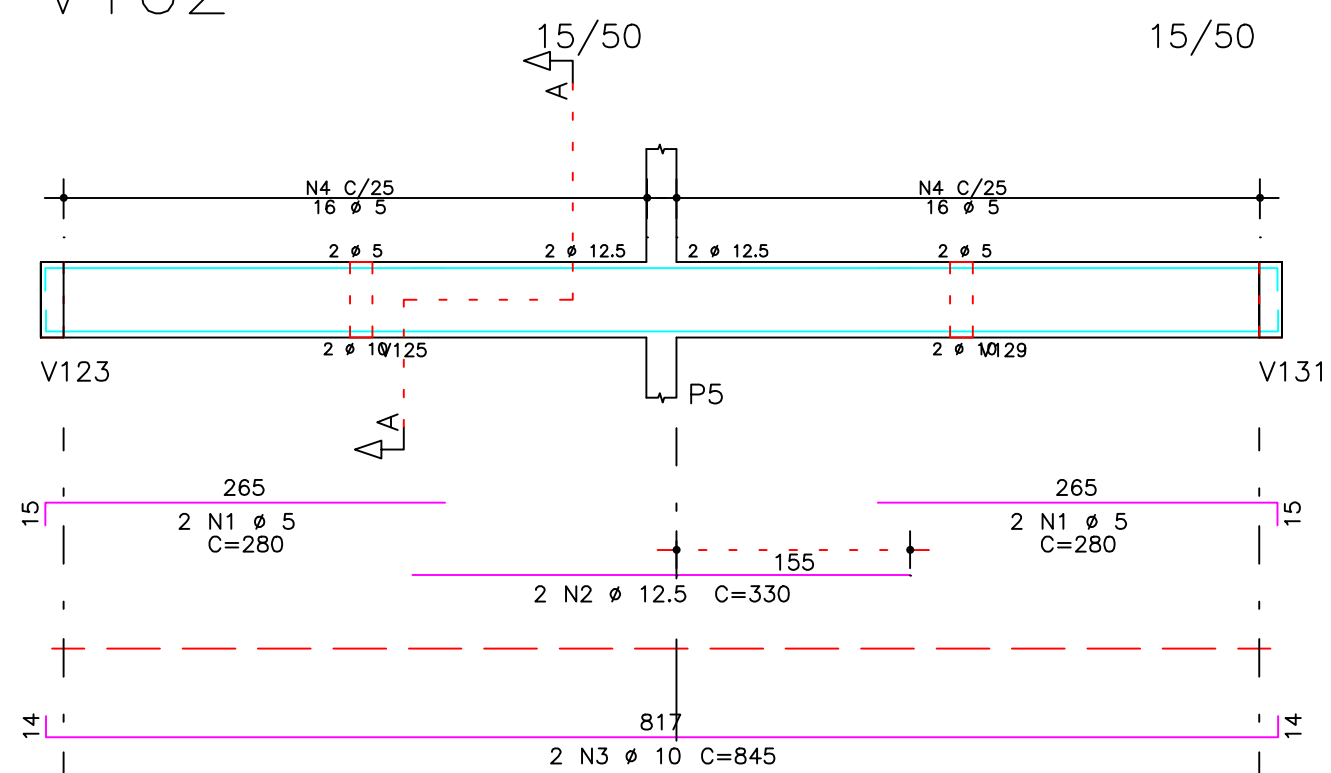
V112



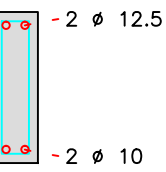
Corte A



V102



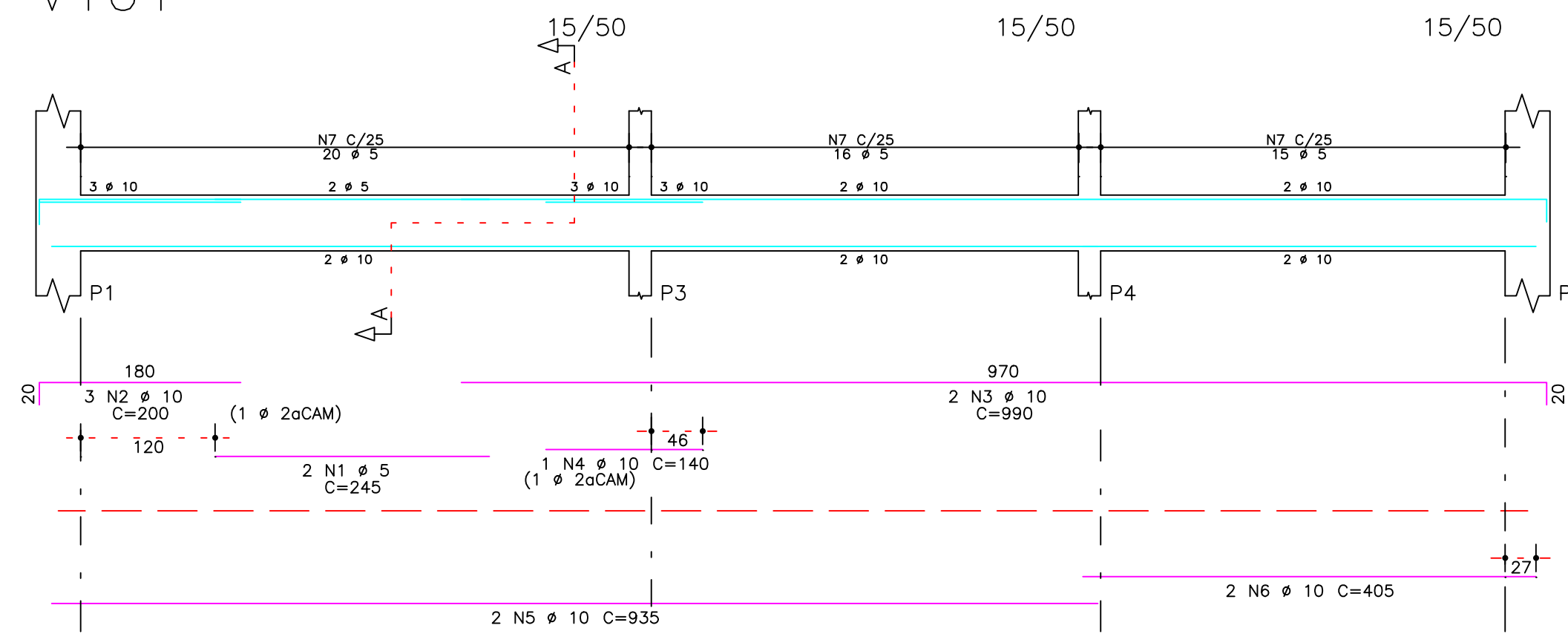
Corte A



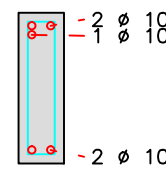
77 N12 Ø 5 C=131

32 N4 Ø 5 C=121

V101

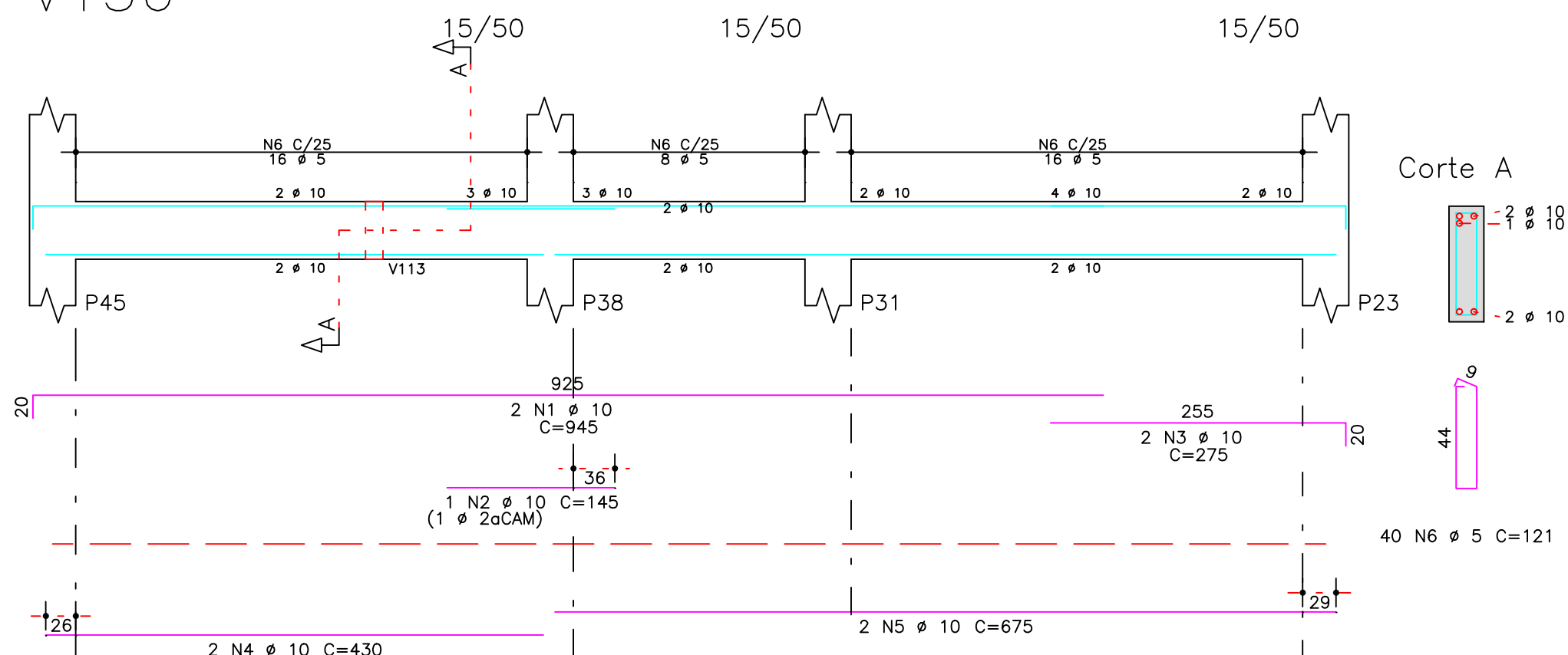


Corte A

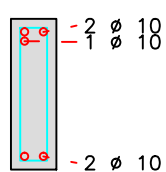


51 N7 Ø 5 C=121

V136



Corte A

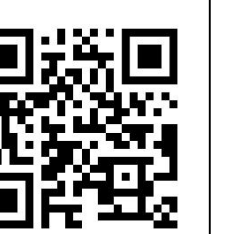


40 N6 Ø 5 C=121

	AÇO	POS	BIT (mm)	QUANT	COMPRIMENTO UNIT (cm)	TOTAL (cm)
V101	60B	1	5	2	245	490
	50A	2	10	3	200	600
	50A	3	10	2	990	1980
	50A	4	10	1	140	140
	50A	5	10	2	935	1870
	50A	6	10	2	405	810
	60B	7	5	51	121	6171
V102	60B	1	5	4	280	1120
	50A	2	12.5	2	330	660
	50A	3	10	2	845	1690
	60B	4	5	32	121	3872
V112	50A	1	10	2	1015	2030
	60B	2	5	2	200	400
	50A	3	10	1	140	140
	60B	4	5	2	345	690
	50A	5	12.5	2	400	800
	50A	6	12.5	1	200	200
	50A	7	10	2	185	370
	50A	8	10	2	830	1660
	50A	9	10	2	540	1080
	50A	10	10	2	650	1300
	50A	11	10	1	295	295
	60B	12	5	77	131	10087
V114	60B	1	5	2	250	500
	50A	2	10	2	250	500
	60B	3	5	8	121	968
V118	50A	1	10	2	945	1890
	50A	2	10	1	145	145
	50A	3	10	2	710	1420
	60B	4	5	2	215	430
	50A	5	10	2	505	1010
	60B	6	5	2	235	470
	50A	7	10	2	170	340
	50A	8	10	2	430	860
	50A	9	10	2	230	460
	50A	10	10	2	420	840
	50A	11	10	2	1000	2000
	50A	12	10	2	480	960
V122	50A	1	10	2	385	770
	50A	2	10	3	190	570
	50A	3	10	2	1120	2240
	50A	4	10	2	175	350
	50A	5	10	2	710	1420
	60B	6	5	2	205	410
	50A	7	10	2	180	360
V136	50A	8	10	2	1140	2280
	50A	9	10	1	330	330
	50A	10	10	2	685	1370
	50A	11	10	2	775	1550
	60B	12	5	97	121	11737
	60B	13	5	4	694	2776
	50A	1	10	2	945	1890
	50A	2	10	1	145	145
	50A	3	10	2	275	550
	50A	4	10	2	430	860
	50A	5	10	2	675	1350
	60B	6	5	40	121	4840

RESUMO AÇO CA 50-60			
AÇO	BIT (mm)	COMPR (m)	PESO (kg)
60B	5	566	87
50A	10	404	249
50A	12.5	17	16
Peso Total 60B =			87 kg
Peso Total 50A =			265 kg

O acesso ao Modelo Estrutural em dimensão pode ser executado pelo QR CODE ao lado, podendo acessar via celulares, tablets e quaisquer outros dispositivos.



<b>Schuring &amp; Schuring Ltda.</b> Escritório Técnico B.E.SCHURING - Projetos de Engenharia Av. XV de Novembro, 489 - Porto 2o. Andar - Cuiabá MT Fone:(065) 321 9959 - Fax:(065) 623 5066 - E-mail - schuring@terra.com.br	
PROJETO: <b>Schuring &amp; Schuring</b>	PROPRIETÁRIO: <b>PREFEITURA MUNICIPAL VARZEZA GRANDE MT</b>
RESP. TEC. EXECUÇÃO:	OBRA: <b>PREFEITURA MUNICIPAL DE VARZEZA GRANDE MT</b>
AUTORES DO PROJETO: <b>Benedito Eliseu Schuring Eng. Civil CREA 715/D-MT</b> <b>André Luiz Schuring Eng. Civil CREA 8697/D-MT</b>	Unid. Básica de Saúde <b>UBS-MATILDE CURVO DE MORAES</b> END.: <b>Av. dos Bandeirantes.</b> Conj. Habit. <b>José Carlos Guimarães, Varzeza Grande-MT</b>
ASSUNTO: <b>BALDRAME DET ARM VIGA</b>	PECAS DETALHADAS: <b>V101 / V102 / V112 / V114 / V118 / V122 V136</b>
FOK: <b>ESCALA: 1:50</b>	DIREITOS AUTORES RESERVADOS <b>VERIFICAR MEDIDAS NA OBRA</b>
ARQUIVO:	DATA: <b>15/07/2019</b>
	FOLHA No. <b>15</b>